



*Cleveland Chapter of The American Society of Plumbing Engineers  
November 2011*

**CHAPTER OFFICERS**

**President**

KEITH BUSH, CPD, CSI  
Kent State University  
Email: kdbush@kent.edu  
(330) 672-9612  
(330) 672-2648 (fax)

**V.P. Technical**

JOHN VARGA  
Scheeser Buckley Mayfield, Inc.  
Email: jvarga@sbmce.com  
(330) 896-4664  
(330) 896-9180 (fax)

**V.P. Legislative**

KEVIN CONYNGHAM  
US Consolidated  
Email: kconyngham@usconsolidated.com  
(330) 655-9220  
(330) 665-9222 (fax)

**V.P. Membership**

GREG TROMBOLD  
Trombold Equipment Company  
Email: gtrombold@hotmail.com  
(216) 663-8700  
(216) 663-8702 (fax)

**Treasurer**

KEVIN NOBLE, P.E., LEED AP  
Scheeser Buckley Mayfield, Inc.  
Email: knob@sbmce.com  
(330) 896-4664 ext. 114  
(330) 896-9180 (fax)

**Administrative Secretary**

TIM HOLLO  
Victaulic  
Email: thollo@victaulic.com  
(440) 241-6944  
(610) 923-3358 (fax)

**Corresponding Secretary**

CRAIG McDOWELL  
Omar McDowell Company  
Email: craig@omarmcdowell.com  
(440) 808-2280  
(440) 808-2266 (fax)

**Affiliate Liaison**

JOHN GRIFFIN  
Libb Company  
Email: johng@libbco.com  
(330) 297-0757  
(330) 297-0157 (fax)

**Newsletter Editor**

MICHAEL DRAB  
Thorson Baker & Associates, Inc.  
Email: mdrab@thorsonbaker.com  
(330) 659-6688  
(330) 659-6675 (fax)

**From the President:**



The technical symposium was great! I have copies of all of the hand outs so if you would like to have a copy please drop me your email and I will forward them on to you. I will have Mike add a link to the topics. Our chapter was awarded two certificates: the first award was the "award of merit" and the second was for "Membership Retention". This was given to our own VP of membership Greg Trombold for recognition of OUR members keeping with ASPE even through the hard times. Kudos's to our membership!!!! The Cleveland Chapter Board Members thank you and your firms for your continued support of ASPE.

Even though the weather in Orlando was full of rain much like Cleveland I understand the technical seminars were very good this year and so were the new round table and networking discussions. The members thought these two new events were of a great benefit and this networking also presented the breakout of the new link for members on a new jobs posting billboard. Please check the new links on the ASPE members section of the website for some very new concepts. There is even a new "app" to download for members that have smart phones/tablets.

The Society is moving in the right direction with new partnerships covering the code bodies and with other professional organizations. Check out the ASPE pipeline for more information on this. ASPE and ASSE will be collaborating on a combined plumbing document covering all of the terms used within the plumbing industry. We will now have a combined dictionary once ready for publication. The society is also moving forward with a green CPD to keep up with the LEED programs so stay tuned for that new certification. ASPE and UCLA are now moving forward in the university arena to have one of the first degrees based on Plumbing Engineering. This will promote the CPD certification program to even a higher level than it is now. The Society is moving to have the CPD accredited by a third party to help bolster the designation and educate the firms throughout the engineering fields as to the importance of having this prestigious credential. This was very exciting news and I know the membership has been pushing for many, many years. That's all for the society news and symposium.

We are still looking for topics for the new year. Please drop John Varga or I a note on anything that you would like to be presented. With the new codes coming into effect this month our chapter is planning on having the state back in to talk to our members on all of the new changes so keep in touch with our web page for the formal date. With all of the new code changes and the new announcements from the DOE that the mechanical code is to adopt the latest ASHRAE 90.1-2010 standard, the DOE intends the states to adopt this standard into place by 2013 for the purpose of energy reduction. I will be looking to see if ASPE and ASHRAE can have a joint meeting on these topics for those who are not members of both organizations.

On the local front the Cleveland Chapter will be presenting Harry's Steak House with a certificate of appreciation for continued support, service and for providing a great meeting place over the past 10 years, so please come and join us for this event. I look forward to seeing you all at this upcoming technical session and dinner.

Regards,  
Keith Bush  
President

**From V.P. Technical:**

I would like to thank Mark Hall with Tyco Thermal Controls for being our guest speaker at the October 12, 2011 training session. The topic of the seminar was on Freeze Protection of Fire Suppression Systems with Electric Heat Trace Cable. The presentation outlined the necessity for heat tracing, self-regulating versus constant wattage heat trace cable technology, NFPA 13 code changes, heat trace analysis versus glycol and dry pipe systems, heat trace controls and supervision, heat trace options and advantages, design layouts for specific applications, and installation requirements and considerations.

The November 9, 2011 seminar topic will be on Rainwater Harvesting / Grey Water Reuse. The speaker will be Paul Riedinger with Charlotte Pipe and Foundry. Paul has over 20 years of experience in piping applications.

Please confirm your reservation for this seminar by noon of Friday, November 4, 2011 with Kevin Noble at [knoble@sbmce.com](mailto:knoble@sbmce.com). It is very important that you RSVP to ensure a dinner seat. Also, if you RSVP and do not attend the meeting without notifying us of a cancellation, you will be sent an invoice in the amount of \$24. The Cleveland Chapter ASPE has a contract with Harry's Steakhouse which requires the chapter to pay for all reservations made. If you have any questions and/or comments about the seminars, please do not hesitate to contact me at [jvarga@sbmce.com](mailto:jvarga@sbmce.com).

John A. Varga  
V.P. technical, Cleveland Chapter



Mark Hall

Tyco Thermal Controls



## Happy Thanksgiving!!

- A Little History -

In 1621, after a hard and devastating first year in the New World the Pilgrim's fall harvest was very successful and plentiful. There was corn, fruits, vegetables, along with fish which was packed in salt, and meat that was smoke cured over fires. They found they had enough food to put away for the winter.

The Pilgrims had beaten the odds. They built homes in the wilderness, they raised enough crops to keep them alive during the long coming winter, and they were at peace with their Indian neighbors. Their Governor, William Bradford, proclaimed a day of thanksgiving that was to be shared by all the colonists and the neighboring Native American Indians.

The custom of an annually celebrated thanksgiving, held after the harvest, continued through the years. During the American Revolution (late 1770's) a day of national thanksgiving was suggested by the Continental Congress.

In 1817 New York State adopted Thanksgiving Day as an annual custom. By the middle of the 19th century many other states also celebrated a Thanksgiving Day. In 1863 President Abraham Lincoln appointed a national day of thanksgiving. Since then each president has issued a Thanksgiving Day proclamation, usually designating the fourth Thursday of each November as the holiday.

**PLUMBING ENGINEERS,  
MECHANICAL ENGINEERS AND  
PLUMBING DESIGNERS**

Growing consulting engineering firm located between Cleveland and Akron, specializing in the design of commercial and institutional buildings, is seeking entry level and experienced Mechanical Engineers, Plumbing Engineers and Plumbing Designers. Engineers should have a bachelor's degree from an accredited university. EIT, PE, or CPD certification a plus. Preference is given to applicants with excellent verbal and written communication skills.

Excellent benefits package offered and salary commensurate with experience. We are an equal opportunity employer.

Send resume in confidence to:



**THORSON BAKER  
& Associates, Inc.**  
3030 W. Streetsboro Rd.  
Richfield, OH 44286  
Contact-us@thorsonbaker.com  
No phone replies accepted.



©2011 Sloan Valve, Inc. All rights reserved.

Any Application.  
Any Environment.™

Basys™ offers a truly innovative platform of modular electronic sensor faucets for a broad range of commercial applications. Backed by a century of experience and grounded in proven Sloan technologies, the platform delivers revolutionary efficiencies in service and maintenance. With five body types, multiple power harvesting options, and advanced programmability and user controls, Basys provides the ultimate experience for users and plumbers alike.



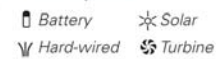
Build a Basys online:  
[sloanvalve.com/basys](http://sloanvalve.com/basys)



Crowns:



Power Options:



**ADCO SALES Inc.**  
**440-944-7500**

**SLOAN.**

- Plumbing Codes
- Medical Gas Training
- Back Flow Prevention
- Safety Services



- Labor Relations
- Education and Training
- Promotion
- Government Affairs

*We're on The Job for You*

For a list of union plumbing contractors, contact:

**CLEVELAND PLUMBING INDUSTRY PROMOTION AND EDUCATION FUND**

Phone: 216.459.0770

Fax: 216.459.1342

Email: [twanner@mapic.org](mailto:twanner@mapic.org)

Web Page: [www.mapic.org](http://www.mapic.org)

**2011-2012 ASPE Meeting/Plumbing Class Schedule  
November 2011**

<u>Date - Location</u>	<u>Topic and/or Agenda</u>	<u>Speaker</u>	<u>Exhibitors</u>
September 14, 2011 – 5:00 PM Cleveland Yachting Club  Cost: \$34.00	Clam Bake	N/A	N/A
October 12, 2011 – 5:00 PM Harry's Steakhouse  Cost: \$24.00	Topic – Freeze Protection of Fire Suppression Systems with Electric Heat Trace Cable	Mark Hall Tyco Thermal Controls	Tyco Thermal Controls
<b>November 9, 2011 – 5:00 PM</b> <b>Harry's Steakhouse</b>  <b>Cost: \$24.00</b>	<b>Topic – Rainwater Harvesting / Gray Water Reuse</b>	<b>Paul Riedinger</b> <b>Charlotte Pipe</b>	<b>Charlotte Pipe</b>
December 14, 2011 – 5:00 PM Harry's Steakhouse  Cost: \$24.00	Topic – Design Guidelines for High Purity Compressed Gas Delivery Systems	Denis Hache Square One	Square One
January 11, 2012 – 5:00 PM Harry's Steakhouse  Cost: \$24.00	Topic – TBD		
February 8, 2012 – 5:00 PM Harry's Steakhouse  Cost: \$24.00	Topic – TBD		
March 14, 2012 – 5:00 PM Harry's Steakhouse  Cost: \$24.00	Topic – TBD		
April 11, 2012 – 5:00 PM Harry's Steakhouse  Cost: \$24.00	Topic – TBD		
May 9, 2012 – 5:00 PM Harry's Steakhouse  Cost: \$24.00	Topic – TBD		

**2011-2012 ASPE Meeting/Plumbing Class Schedule  
November 2011**

The above is the meeting/plumbing class schedule for the 2011-2012 ASPE year. Updated information will appear in subsequent newsletter issues. All meetings will be at Harry's Steakhouse, 5664 Old Brecksville Road, Independence unless otherwise indicated. The meeting/plumbing class, including dinner, is \$24.00. Reservations are required. A mini product show will be held before each meeting/plumbing class highlighting some of the materials discussed in class or products that will assist the engineer in understanding what they are designing or specifying. All plumbing classes will qualify for 0.1CEU hours and will assist in preparation for the ASPE CPD examination.

The following times will be enforced as strictly as possible.

Make your reservations a minimum of two days before the meeting/class and try to be on time.

- Mini product show 5:00 to 6:00      Dinner 6:00
- ASPE business 6:30                      Plumbing Class 6:45 to 7:45



An EMCOR Company

**S.A. Comunale**

*Full Service Fire Protection & Mechanical Contractors*

# We Solve Your Problems!

## Mechanical

- ▶ **Plumbing**
- ▶ **Heating**
- ▶ **Air Conditioning**
- ▶ **Process Piping**

## Fire Protection

- ▶ **Sprinklers**
- ▶ **Extinguishers**
- ▶ **Kitchen Suppression**
- ▶ **Special Hazards**
- ▶ **Alarm & Detection**

### Offices In:

*Ohio* - Akron, Cincinnati, Cleveland, Columbus, Fremont, Marion, Youngstown

*Pennsylvania* - Philadelphia, Pittsburgh, Reading

*New Jersey* - Atlantic City, Phillipsburg

*Michigan* - Detroit • *Washington DC*

[www.sacomunale.com](http://www.sacomunale.com)

# 800-776-7181

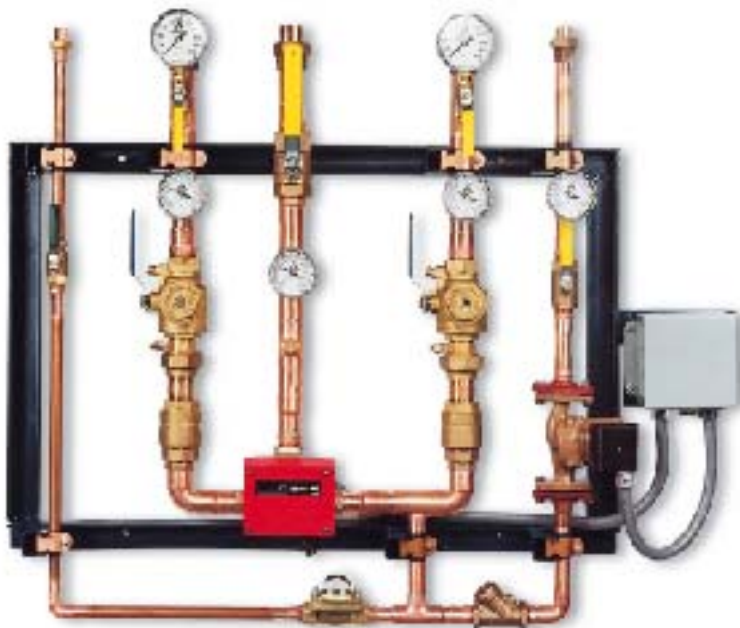
*Large Enough To Meet Your Needs, Small Enough To Care*

WE TOOK THE THERMOSTAT OUT AND PUT IN

# THE BRAIN.

See The Brain™ at work at [www.armstrong-intl.com/aspe](http://www.armstrong-intl.com/aspe)

GO



**UNPARALLELED HOT-WATER  
TEMPERATURE CONTROL IN  
AN ELECTRONIC MIXING  
CENTER (EMC) THAT PLAYS  
IT SMART AND SAFE.**

When you actually see it perform live, you'll change the way you think about central hot-water distribution systems. Designed specifically to provide  $\pm 2^{\circ}\text{F}$  recirculation system control during zero-demand idling periods, our EMC also delivers remarkable performance across the full diversity of hot water use. And it has no minimum system draw-off requirement. With remote programming and control features, and building automation system interface capability built into the mixing unit, the EMC offers an unparalleled portfolio of valuable benefits. We don't just say it; we'll prove it to you online. Log on to [www.armstrong-intl.com/aspe](http://www.armstrong-intl.com/aspe) today and sign up for a live guided tour.

**Omar McDowell Co.**

Sales - Consulting - Service

Since 1912

OHIO • NEW YORK

Westlawn Square

25109 Detroit Road, Suite 320

Westlake, Ohio 44145

Ph: 440-808-2280 • 440-808-2266

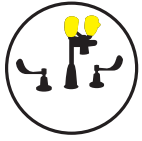


**Armstrong®**  
Intelligent System Solutions™

STEAM • AIR • HOT WATER

# SPEAKMAN®

the KEY for every application



EYEWASHES



ELECTRONIC FAUCETS



FLUSH VALVES



SHOWERHEADS



SPACESAVER EYEWASH



SHOWER VALVE



MECHANICAL FAUCETS



## EDUCATION

Public Restroom



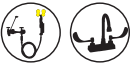
Science Lab



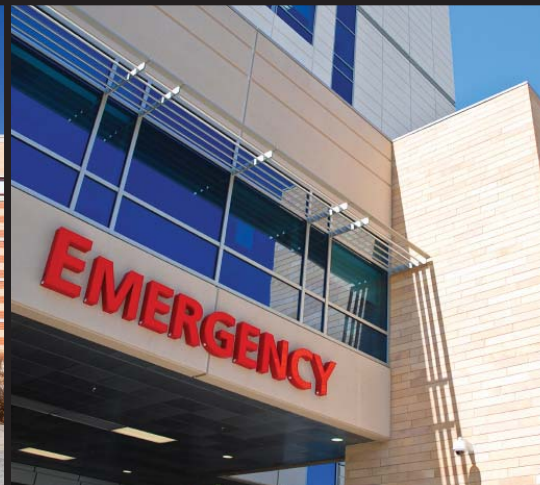
Locker Room



Janitorial Closet



Boiler Room



## HEALTHCARE

Public Restroom



Chemistry Laboratory



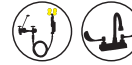
Patient Room



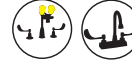
Nurses Station



Janitorial Closet



Boiler Room



## HOSPITALITY

Public Restroom



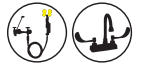
Guest Bathroom



Kitchen



Janitorial Closet



Boiler Room



DISNEY MCLANE & ASSOCIATES  
428 McGregor Avenue, Cincinnati, OH 45206  
1.800.542.1682

**SPEAKMAN®**  
*Absolutely the best.*  
WWW.SPEAKMANCOMPANY.COM

# R.L. Deppmann Company

Southfield - Grand Rapids - Saginaw - Northern Ohio



## NORTHERN OHIO

6910 Treeline Drive Suite A  
Brecksville, OH 44141  
PHONE (440) 526-2439  
FAX (440) 526-6454  
www.deppmann.com

### AC TECHNOLOGY CORP.

*Variable Frequency Drives*

### ADVANCE THERMAL

*Removable Insulation Covers*

### AERCO

*Condensing Boilers & Water Heaters  
Indirect & Semi-Instantaneous Heaters  
Clean Steam Generators*

### BELL & GOSSETT

*Automatic Flow Balance Valves  
Centrifugal Pumps  
Base Mounted  
Close Coupled  
Double Suction  
Horizontal Split Case  
In-Line  
Multi-Stage  
Submersible Pumps  
Vertical Turbine Pumps  
Domestic Water Heating Systems  
Heat Exchangers  
Plate Heat Exchangers  
Replacement Tube Bundles  
Shell & Tube  
Heat Transfer Packages  
Hydronic Specialties  
Pressure Booster Systems  
Variable Speed Systems  
Expansion/Compression Tanks*

### BOBCO

*Differential Gauge Kits*

### CEMLINE CORP.

*ASME Tanks  
Boiler Blowdown Separators  
Condensate Coolers  
Hot Water Storage Heaters  
Packaged Water Heaters  
Replacement Tube Bundles  
Stone Steel Lined Tanks  
Unfired Steam Generators*

### ITT DOMESTIC PUMP

*Boiler Feed Systems  
Condensate Return Pumps  
Pressure Powered Pumps  
Vacuum Pumps*

### DOW HEAT TRANSFER FLUID

*DOWTHERM\* - Heat Transfer Fluids  
DOWFROST\* - Heat Transfer Fluids*

### FLEX-HOSE CO., INC.

*Flexible Pump Connectors  
Expansion Joints/Loops  
Expansion Compensators  
Pipe Guides*

### GRISWOLD CONTROLS

*Automatic Flow Limiting Valves  
Coil Hook-Up Kits  
Solids Separators and Filter Systems*

### GRISWOLD WATER QUALITY

*Solids Separators and Separator Systems  
Sand Filters  
Glycol Fill Systems*

### HEATFAB

*High Performance Chimneys & Vents*

### HBX CONTROL SYSTEMS

*Modular HVAC Controllers  
Geothermal/Solar Controllers  
Remote Management Software*

### ITT HOFFMAN SPECIALTIES

*Condensate Return Pumps  
Vacuum Pumps  
Steam Reducing and Control Valves  
Steam Traps, Vents & Specialties*

### ITT MCDONNELL & MILLER

*Boiler Safety Controls  
Level Controls  
Flow Switches*

### KADANT JOHNSON

*Pressure Powered Pumps  
Separation Devices  
Vacuum Breakers  
Solenoid Operated Valves*

### LAARS HEATING SYSTEMS

*Residential/Commercial Boilers  
Commercial Water Heaters  
Commercial Pool Heaters*

### MP PUMPS

*Self Priming Pumps  
High Temperature Pumps  
Engine Driven Pumps*

### NILES STEEL TANKS

*Glass Lined Storage Tanks  
Specialty Tanks*

### PETERSON EQUIPMENT CO.

*"Petes" Pressure/Temperature Test Plugs*

### PRESO

*Annular/Venturi Flow Meters*

### ROVANCO

*Pre-Insulated Pipe  
Containment Pipe*

### TOWER TECH COOLING TOWERS

*High efficiency cooling towers  
HVAC Cooling towers  
Process cooling towers  
Power generation cooling towers*

### VERTIFLO

*Pedestal Mount - Sump Pumps*

### WATTS RADIANT

*Radiant Heating Products  
Snowmelting  
Electric Radiant Heating*

### WEKSLER GLASS

*Pressure Gauges  
Temperature Control Valves  
Thermometers*

### WESSELS COMPANY

*Custom Tanks  
Glass Lined Storage Tanks*

# **MASTROIANNI & ASSOCIATES, INC.**

MANUFACTURER REPRESENTATIVES OF PRODUCTS FOR THE MECHANICAL TRADES

<b><u>PACO PUMPS</u></b> .....	<a href="http://www.paco-pumps.com">www.paco-pumps.com</a>
<ul style="list-style-type: none"><li>• End Suction &amp; In-Line Centrifugal Pumps</li><li>• Horizontal Split Case</li><li>• Condensate Pumps LoNPSH Pumps</li></ul>	<ul style="list-style-type: none"><li>• Sump Pumps</li><li>• Sewage Ejectors</li><li>• Boiler Feed Pumps</li></ul>
<b><u>RUNTAL</u></b> .....	<a href="http://www.runtalnorthamerica.com">www.runtalnorthamerica.com</a>
<ul style="list-style-type: none"><li>• Architectural &amp; Custom Perimeter Heating</li></ul>	<ul style="list-style-type: none"><li>• Hot Water &amp; Steam Radiators</li></ul>
<b><u>NEXUS</u></b> .....	<a href="http://www.nexusvalve.com">www.nexusvalve.com</a>
<ul style="list-style-type: none"><li>• Combination Balance Valves</li></ul>	<ul style="list-style-type: none"><li>• Coil Piping Packages</li></ul>
<b><u>PURE HUMIDIFIER</u></b> .....	<a href="http://www.purehumidifier.com">www.purehumidifier.com</a>
<ul style="list-style-type: none"><li>• Steam &amp; Electric Self-Generating Humidifiers</li></ul>	<ul style="list-style-type: none"><li>• Gas Humidifiers</li></ul>
<b><u>VIBRATION ELIMINATOR</u></b> .....	<a href="http://www.vec0-n-y.com">www.vec0-n-y.com</a>
<ul style="list-style-type: none"><li>• Spring Isolators &amp; Rubber-in-Shear Isolators</li><li>• SEISMIC</li><li>• Roof Curb Isolators, Rails &amp; Bases</li></ul>	<ul style="list-style-type: none"><li>• Neoprene Pads</li><li>• Inertia Bases</li><li>• Floating Floors</li></ul>
<b><u>HYSpan/BARCO</u></b> .....	<a href="http://www.hyspan.com">www.hyspan.com</a>
<ul style="list-style-type: none"><li>• Ball Joints (For Pipe Expansion &amp; Movement)</li><li>• Venturi Flow Measuring System</li></ul>	<ul style="list-style-type: none"><li>• Portable Read-out Meters</li></ul>
<b><u>TIGERFLOW</u></b> .....	<a href="http://www.tigerflow.com">www.tigerflow.com</a>
<ul style="list-style-type: none"><li>• Domestic Water Booster Packages</li><li>• Heat Exchanger Packages</li></ul>	<ul style="list-style-type: none"><li>• Variable Flow Pump Packages</li></ul>
<b><u>THRUSH</u></b> .....	<a href="http://www.thrushco.com">www.thrushco.com</a>
<ul style="list-style-type: none"><li>• End Suction &amp; In-Line Pumps</li></ul>	<ul style="list-style-type: none"><li>• Heat Exchangers</li></ul>
<b><u>MUELLER</u></b> .....	<a href="http://www.spxvalves.com">www.spxvalves.com</a>
<ul style="list-style-type: none"><li>• Triple Duty Valves (Grooved)</li></ul>	<ul style="list-style-type: none"><li>• Suction Diffusers</li></ul>
<b><u>POLARIS</u></b> .....	<a href="http://www.polarisphe.com">www.polarisphe.com</a>
<ul style="list-style-type: none"><li>• Plate &amp; Frame Heat Exchangers</li></ul>	
<b><u>VALUE ENGINEERED PRODUCTS</u></b> .....	<a href="http://www.valueng.com">www.valueng.com</a>
<ul style="list-style-type: none"><li>• Insulated Pipe Inserts</li></ul>	
<b><u>METRAFLEX</u></b> .....	<a href="http://www.metraflex.com">www.metraflex.com</a>
<ul style="list-style-type: none"><li>• Flexible Connectors: Rubber, Stainless Steel &amp; Teflon</li><li>• Expansion Joints &amp; Compensators</li><li>• MetraLoops &amp; FireLoops</li><li>• MetraSeals &amp; FireSeals (pipe to wall seals)</li></ul>	<ul style="list-style-type: none"><li>• Pipe Guides</li><li>• Check Valves</li><li>• Air Vents</li><li>• Strainers</li></ul>
<b><u>JOHN WOOD CO.</u></b> .....	<a href="http://www.johnwood.com">www.johnwood.com</a>
<ul style="list-style-type: none"><li>• Air Separator</li></ul>	Expansion Tanks

Website: [www.mastroiannihvac.com](http://www.mastroiannihvac.com)

**Please Contact:**

**Frank Mastroianni**

[fmastroianni@mastroiannihvac.com](mailto:fmastroianni@mastroiannihvac.com)

7601 FIRST PLACE DR. STE A13 \* CLEVELAND, OHIO 44146 \* (440) 786-1100 FAX 786-1103



## LAKESIDE SUPPLY COMPANY

3000 West 117<sup>th</sup> Street • Cleveland, OH 44111-1667

(216) 941-6800 • Fax (216) 941-8408 or (216) 941-1746

1-800-537-1234 • [www.lakesidesupply.com](http://www.lakesidesupply.com) • [sales@lakesidesupply.com](mailto:sales@lakesidesupply.com)

### PIPE

Steel - Black, Galv, PE, T & C  
Grooved and Seamless  
Soil - SW, No Hub  
Copper - K, L, M, DWV  
Refrigeration  
Gas - EOG, COLUMBLA  
PVC - 40, 80, DWV, CPVC, Sewer  
Flowguard Gold, CPVC  
Pex  
Stainless Steel  
Brass  
Clay  
IPEX - Enfield Mech. Joint  
Enfusion  
Empure

### FITTINGS

DIXON-CAM & Groove Specialty Items  
Malleable, Cast Iron  
Forged Steel - Thrd, Socket Weld  
Soil, SW, No Hub  
VICTAULIC - Grooved, Pressfit, No-Sweat  
Copper, Cleaned for Oxygen  
VIEGA ProPress  
Gas - EOG, COLUMBLA  
PVC - 40, 80, DWV, CPVC, Sewer  
Flowguard Gold, CPVC  
Pex  
Stainless Steel  
Brass - Thrd, Comp, Flare, Hose  
Clay  
IPEX - Enfield Mech. Joint  
Enfusion  
Empure  
Butt Weld, Carbon, Stainless, Aluminum

### COUPLINGS

JCM  
CLAMP-ALL  
DRESSER  
FERNCO/MISSION  
STEEL  
SKINNER/TELSCO

### GROOVED FITTINGS *or* VALVES

VICTAULIC - Grooved, FIT, Copper, Pressfit

### FIRE PREVENTION

VICTAULIC - Firelock Fittings, Sprinkler Heads,  
Alarm Valves, Devices, Firelock CPVC Pipe  
and Fittings  
Light Wall Steel Pipe  
POTTER ROEHMER - Fittings and Cabinets

### GAS PIPE, FITTINGS & VALVES

COLUMBLA & EAST OHIO GAS - Meter Bars &  
Gas Manifolds  
ACTARIS - Gas Regulators and Meters  
Central Plastics  
Performance - Gas Pipe and Fittings  
Rockwell - Poly Gas Valves NORMAC  
- Fittings PERFECTION CORP. X-TRU  
COAT - Steel Pipe DRESSER APPT -  
Gas Test Equipment

### GAUGES, THERMOMETERS & CONTROLS

TREXICE  
SPENCE

### VALVES & ACCESSORIES

MILWAUKEE - Bronze, Ball, Iron, Butterfly, High  
Performance Butterfly  
STOCKHAM - Bronze, Ball, Iron, Butterfly  
VICTAULIC -- #300, #700, Ball, Check  
RESUN - Plug  
HAYWARD - PVC/TU, Ball, Check, Single Entry,  
Strainers  
JOMAR - Ball, Add-a-Valve  
EVERLASTING - Boiler Blow Down  
A. Y. McDONALD - Gas & Steam Cocks  
WATTS  
ANVIL BALL  
BONNEY FORGE  
FIRE PROTECTION - Valves and Trim  
BABBITT-Sprockets

### HANGERS, SUPPORTS

SUPERSTRUT - Kindorf Channels & Supports  
ANVIL  
EMPIRE  
MINERALLAC  
DIXON - Hose Clamp  
SUMNER MFG - Pipe Supports, Pipefix, Stakfix,  
Posifix HOLDRITE PIPE-  
TYTES Angle Iron & Channel  
Iron SPEEDY ERICO

### TUBULAR BRASS & PLASTIC

P-Traps, Tailpieces, Strainers  
Desanco Fittings Lav & Closet  
Supplies Angle & Straight  
Valves

### MISCELLANEOUS

Water Filters & Softeners BRADY - Pipe  
Markers, Valve Tags HANDLEY - Valve &  
Curb Boxes Gaskets, Oarlock, Granite, Spiral  
Wound Pipe Insulation, Heating Tape and  
Fittings Pipe Sleeves, Link Seals

### DRINKING FOUNTAINS &

#### EMERGENCY WASH EQUIPMENT

HALSEY TAYLOR ELEKAY Drinking Fountains  
SPEARMAN MFG Emergency Eye-Wash  
BRADLEY Wash Fountains, Drinking Fountains  
HAWS MFG EBEO- OASIS

### HEATERS - RESIDENTIAL *or* COMMERCIAL

A. O. SMITH  
AMTROL EXPANSION TANKS  
Storage Tanks  
IN-SINK-ERATOR  
Coil Type Heaters  
Instantaneous Water Heaters  
CHRONOMITE

### ROOF *S/* FLOOR DRAINS

WADE  
CARRIERS  
J. R. SMITH  
JOSAM  
ZURN  
EAST JORDAN SEWER GRATES

### FAUCETS & PARTS

MOEN  
CHICAGO  
ELJER  
DELTA  
CENTRAL BRASS  
WOODFORD ANTI-FREEZE  
SYMMONS  
POWERS  
LEONARD

### HOT WATER - STEAM CONTROLS

SPENCE - Traps, Control Valves, Regulators  
TRESICE - Gages, Controls & Thermometers  
MCDONNELL & MILLER - Boiler controls  
AMTROL - Tanks & Fittings  
DANFOSS - Controls  
BARNES & JONES - Traps, Repair Parts

### FIXTURES *or* ACCESSORIES

ELJER  
CRANE - Lav, Toilet  
ELEKAY  
OLSONITE SEATS  
JUST-SS Sinks  
IN-SINK-ERATOR - Disposals  
SLOAN - Flush Valve & Parts  
DELANY - Flush Valve & Parts  
E. L. MUSTEE - Laundry Trays, Mop Basins,  
Durastall Showers  
ACORN - Parts ZURN - Flush  
Valve & Parts FLAT - Fixtures  
BRADLEY - Sinks & Fixtures

### TOOLS

RIDGE TOOL  
PROTO  
MILWAUKEE TOOL  
MARCO  
LENOX  
CHAMPION  
REED MFG  
WHEELER-REX  
SUMNER MFG  
RAWL  
JET-SWET  
COBB PIPE FREEZING  
PASCO SPECIALTY TOOLS  
CHERNE TEST BALLS  
CHANNELLOCK  
GOSS TORCHES  
TURBOTORCH  
VERMETTE  
Street Keys  
Grinding Wheels & Brushes  
Extension Cords & GFIs

### TOOL RENTALS

VICTAULIC - Grooving Machine  
ENFUSION TOOL  
ENFURE TOOL  
MCELROY FUSION GAS MACHINES  
RIDGE PROGRESS

### SERVICES

Valve Automation Electric and  
Pneumatic Lakeside Managed  
Store Rooms



107 Cypress Street S.W. Reynoldsburg, OH 43068  
 phone: 740.927.6880 or 888-927-4244 fax: 740.927.4545

[www.RepSourceLLC.com](http://www.RepSourceLLC.com)

Manufacturers Representatives Serving Plumbing, Mechanical, Electrical, Architectural and Water Treatment Industries with Offices in Columbus, Cleveland and Cincinnati  
 Representing the following product lines:

<b>A Better Idea, Inc.</b> <a href="http://www.abetterideainc.com">www.abetterideainc.com</a>	<i>E-Z Sleeper / Quick Block</i> – Rooftop pipe support blocks
<b>ABT – Polydrain</b> <a href="http://www.abtdrains.com">www.abtdrains.com</a>	Pre-sloped polymer trench drains, <i>Trench Former</i> – pre-sloped trench drains systems.
<b>American Plumber</b> <a href="http://www.americanplumber.com">www.americanplumber.com</a>	Sediment cartridge filters, drinking water systems, water softeners, media filters, point of use filters and specialty filters.
<b>Aqua Glass</b> <a href="http://www.aquaglass.com">www.aquaglass.com</a>	Acrylic and gelcoat fiberglass shower stalls, bathtubs, soaking tubs, whirlpools, multi-piece, special care, wall kits and laundry tubs for residential, commercial and institutional.
<b>Bermad</b> <a href="http://www.bermad.com">www.bermad.com</a>	Automatic control valves for: pressure reducing, fire protection control, pressure relief, pump control, float, check, altitude, flow and hydrometers.
<b>Bosch Pro Tankless Water Heaters</b> <a href="http://www.bosch-climate.us">www.bosch-climate.us</a>	Tankless instantaneous water heaters. Wall hung hydronic boilers.
<b>Boss Products</b> <a href="http://www.bossproducts.com">www.bossproducts.com</a>	Adhesives, anaerobic compounds, silicone sealants, polyurethane sealants, caulking, lubricants, aerosols, anti-seize compounds, hand cleaners and fire stop products.
<b>Bradley Corporation</b> <a href="http://www.bradleycorp.com">www.bradleycorp.com</a>	Washfountains, <i>Express</i> and <i>Frequency</i> lavatory systems, <i>Ndite</i> technology, <i>Navigator</i> thermostatic mixing valves, showers, safety equipment, metering faucets, security fixtures, patient care units, <i>Terreon</i> solid surface products.
<b>Creative Industries</b> <a href="http://www.creative-terrazzo.com">www.creative-terrazzo.com</a>	Pre-cast terrazzo shower floors, mop basins, concrete laundry tubs and stairs or benches, terrazzo or concrete or glass counter tops and custom terrazzo products.
<b>Eemax</b> <a href="http://www.eemaxinc.com">www.eemaxinc.com</a>	Electric Instantaneous water heaters, DI and booster heaters, emergency shower eyewash heaters.
<b>Just Manufacturing / EBC</b> <a href="http://www.justmfg.com">www.justmfg.com</a>	Stainless steel commercial, institutional & residential sinks. <i>EBC</i> stops/supplies, cast p-traps, cast & tubular waste fittings.
<b>Liberty Pumps</b> <a href="http://www.libertypumps.com">www.libertypumps.com</a>	Sump, drain and condensate, effluent, sewage, grinder, macerating toilet and engineered pump system packages.
<b>Marlo</b> <a href="http://www.marlo-inc.com">www.marlo-inc.com</a>	Commercial & industrial water softeners, media filters, reverse osmosis, dealkalizers and deionized water treatment equipment.
<b>Mifab</b> <a href="http://www.mifab.com">www.mifab.com</a>	Cast iron floor drains, floor sinks, roof drains, cleanouts, carriers, interceptors, hydrants, shock absorbers, trap primers, backwater valves, access doors, no-hub couplings, pipe markers, roof blocks, <i>Proformer</i> modular trench drain system, <i>Beeco</i> backflow's and prv's.
<b>Moen Commercial</b> <a href="http://www.moencommercial.com">www.moencommercial.com</a>	Commercial, industrial & institutional faucets and fittings. <i>FreeHand</i> sensor operated flush valves and faucets.
<b>Oasis International</b> <a href="http://www.oasiscoolers.com">www.oasiscoolers.com</a>	Oasis International, headquartered in Columbus, Ohio, manufactures and distributes a wide range of water dispensing solutions under the <i>Oasis</i> and <i>Sunroc</i> brands.
<b>Plumberex</b> <a href="http://www.plumberex.com">www.plumberex.com</a>	<i>Pro-Extreme</i> , <i>Trap Gear</i> , <i>Handy Shield Maxx</i> and <i>Clear Shield</i> lavatory trap and riser insulation kits. <i>Mushroom Flange</i> and <i>Floor Sink Carrier</i> specialty products.
<b>Proceptor / Green Turtle</b> <a href="http://www.greenturtletech.com">www.greenturtletech.com</a>	Fiberglass oil, grease, and solids interceptors with 30-year bonded warranty, available as decontamination or storage tank, double wall, leak detection and level sensing. <i>PHIX</i> acid neutralization systems. <i>Retroceptor</i> kitchen and <i>Microceptor</i> coffee grinds interceptors.
<b>Pro-Grit Products</b> <a href="http://www.proabrasives.com">www.proabrasives.com</a>	Open Mesh Sand Cloth that is rugged, durable and will last longer than other abrasive products. Each 10 yard roll is 180 grit and comes in four highly visible fluorescent colors.
<b>Raychem / Tyco Thermal Controls</b> <a href="http://www.tycothermal.com">www.tycothermal.com</a>	<i>HWAT-Plus</i> self-regulating heating cable system for domestic hot water, <i>XL-Trace</i> freeze protection cable, <i>Pyrotanax MI</i> and <i>Electromelt</i> snow and anti-icing cable, <i>IceStop</i> roof and gutter de-icing cable, <i>RaySol</i> floor warming and freezer frost heave cable, <i>QuickNet</i> floor heating cable.
<b>Schott Scientific Glass / Kimax</b> <a href="http://www.us.schott.com/drainline">www.us.schott.com/drainline</a>	Glass piping for acid waste and containment piping systems. <i>Knight-Ware</i> acid neutralizing sumps.
<b>Water Control Corporation</b> <a href="http://www.watercontrolinc.com">www.watercontrolinc.com</a>	Rainwater Reclamation Systems with Ultraviolet or Ozone purification, vortex downspout separators, storage tanks and complete controls for turnkey systems.
<b>Waterless Company</b> <a href="http://www.waterless.com">www.waterless.com</a>	<i>Waterless</i> "No Flush" vitreous china and fiberglass urinals with <i>EcoTrap</i> and <i>Blue Seal</i> liquid. <i>UTC Sentinel</i> sensor flushing systems. <i>Everprime</i> floor drain trap primer liquid. <i>Signature</i> and <i>Greenclean</i> chemicals.
<b>Additional Products Distributed:</b> <a href="http://www.repsourcellc.com">www.repsourcellc.com</a>	Bathroom Partitions (solid plastic, baked enamel, stainless steel, laminate and phenolic), Bathroom Accessories, Lockers (solid plastic and metal), Water Treatment Products.

**Odorless.  
Worryless.  
Costs less.**



**LEED®  
Applicable!**

# **WATERLESS™**

*No-Flush™ Urinals*



## **RETROFIT / NEW CONSTRUCTION**

- Lowest Long Term Cost
- Most Simple System
- Longest Installation History
- No Overflows
- Reduces Waste Volume
- Reduces Vandalism

PROFESSIONAL CONSERVATION™, SINCE 1991

## **RepSource, LLC**

107 Cypress Street S.W., Reynoldsburg, OH 43068

**740.927.6880 or 888.927.4244**

[www.waterless.com](http://www.waterless.com)



*Finally -  
A Simple Solution  
to an Age Old  
Plumbing Problem*

**EVERPRIME®**  
*Simply Add It ...and Forget It!*

Works great in unused floor and shower drains, sinks and water fountains, toilets/urinals, condensate drains and other unprimed or unused drains.

**Yep, it's that good!**



► What do the Beach Boys, Mickey Mouse, and T&S low-lead faucets have in common?

► They all got their start in California, and they all swept the nation. Although California led the way with the AB1953 legislation mandating low-lead faucets, it's only a matter of time until they are required in all states. And T&S is ready — all of our faucets are low-lead compliant and are available across the country. And, as always, T&S faucets are as rugged and reliable as they come, and meet the requirements of the Buy America Act. Contact your sales rep for more information.

Mickey Mouse® and the Beach Boys® are trademarks of Disney Enterprises, Inc. and Brothers Records, Inc., respectively, and T&S Brass has no affiliation with either such entity.



contributing  
to LEED  
certification



**RELIABILITY BUILT IN™**  
www.tsbrass.com • 800.476.4103

T&S plumbing products represented in Cleveland by:  
Midwest Spec - 800-298-0401

**CLEVELAND: It'll Rock You.**



American Society of Plumbing Engineers  
Cleveland Chapter  
PO Box 5962  
Cleveland, Ohio 44101-0962

\*\* Local Chapters are not authorized to speak for the Society